

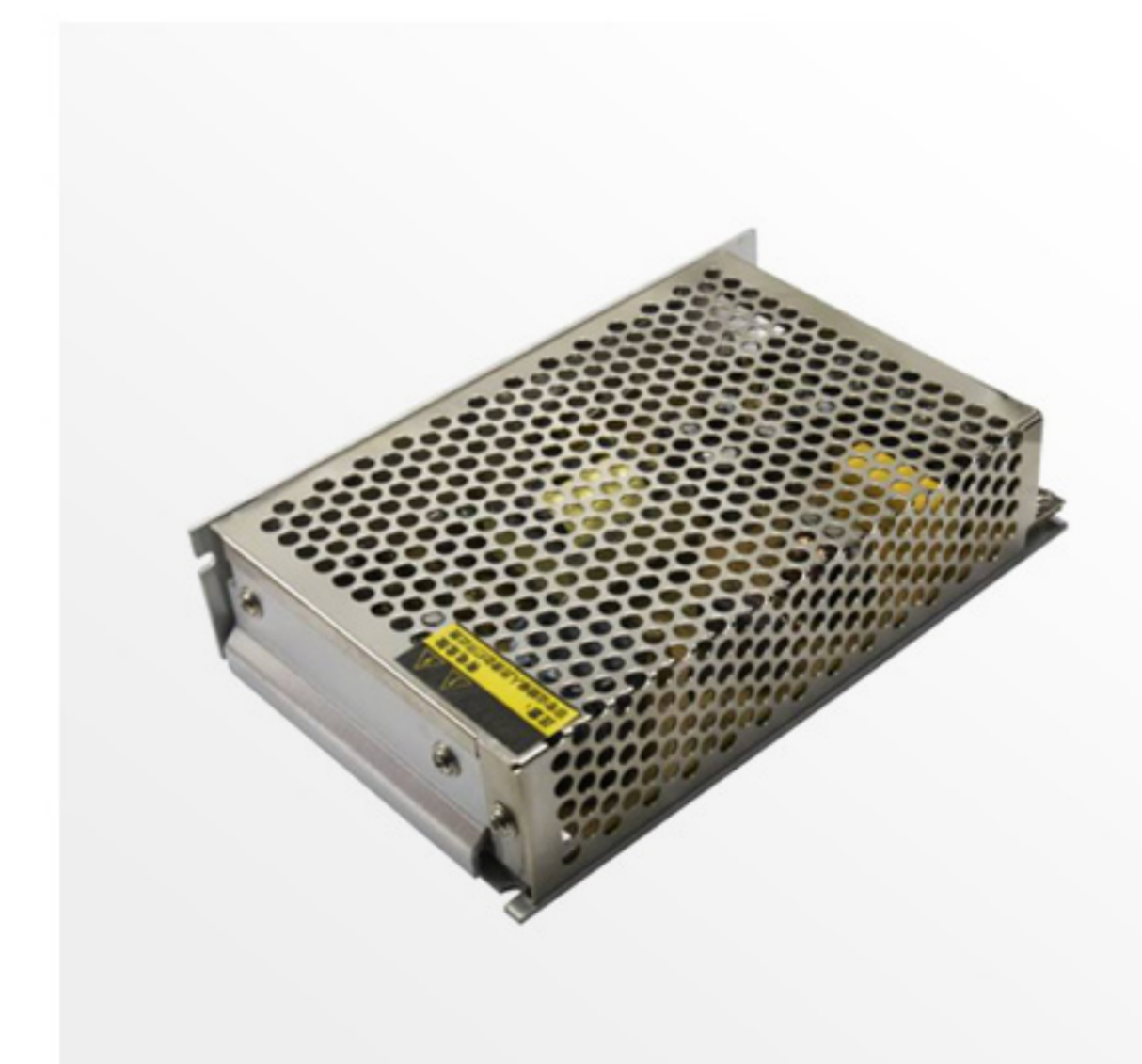
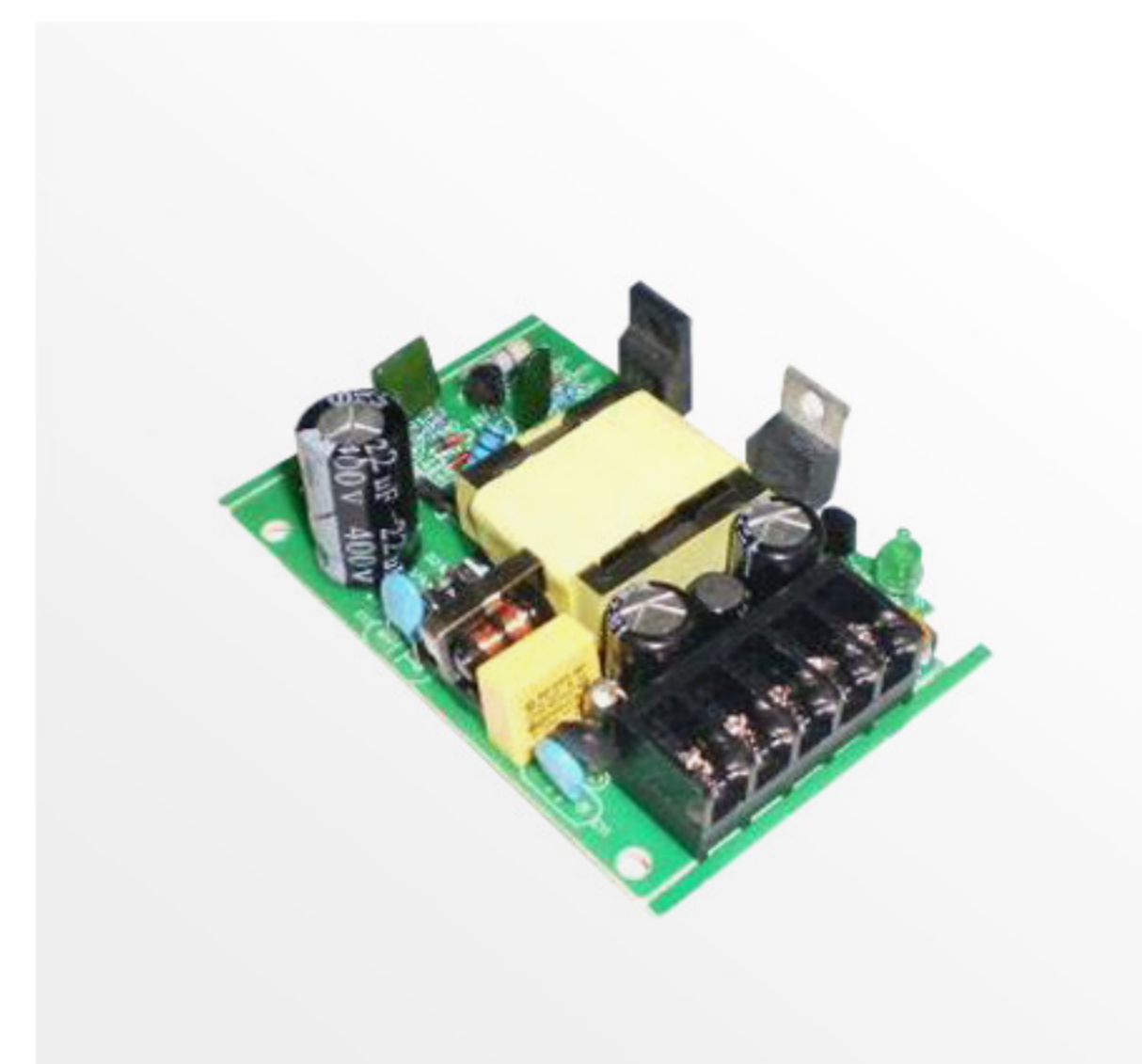


**ADVANCED
ELECTRONICS**

поставка электронных компонентов

Драйверы светодиодов

- Поставки драйверов напрямую с заводов-производителей.
- Представленные модели выпускаются серийно.
- Изготовление заказного драйвера по ТЗ или модификация выпускаемого по требованию заказчика.
- Производим входной контроль в нашем офисе в Китае.
- Стандартно средний срок поставки составляет 2-3 недели.
- Технические специалисты компании осуществляют поиск и подбор аналогов любых производителей драйверов.
- Инженерная поддержка Ваших разработок, проектов и технических задач.



Led Driver Series

General Specifications

- ★ Input: 90~264Vac 47~63Hz
- ★ Storage Temperature: -40°C~+80°C
- ★ Operating Temperature: 0°C ~+60°C
- ★ Operating Humidity: 10%~95%RH
- ★ Storage Humidity: / 10%~95%RH
- ★ Low standby power : 0.3W~1W
- ★ Waterproof : Ip67



Meets Energy Efficiency Level IV Standards

- ★ Protection: Over Voltage/Short Circuit/
- ★ Approvals: UL/CUL/FCC/CE/CCC/KC/GS/PSE/C-TICK/SAA/TUV/BS/WEEE/ROHS/V/Reach

Led Constant Voltage Waterproof Driver

Watt	Output(V)	Max Current
10W	12V	833mA
10W	24V	416mA
20W	12V	1660mA
20W	24V	830mA
30W	12V	2500mA
30W	24V	1250mA
45W	12V	3750mA
45W	24V	1875mA
60W	12V	5000mA
60W	24V	2500mA
80W	12V	5000mA
80W	24V	2500mA
100W	12V	8330mA
100W	24V	4160mA
150W	12V	12500mA
150W	24V	6250mA
200W	12V	16660mA
200W	24V	8330mA
240W	24V	10000mA

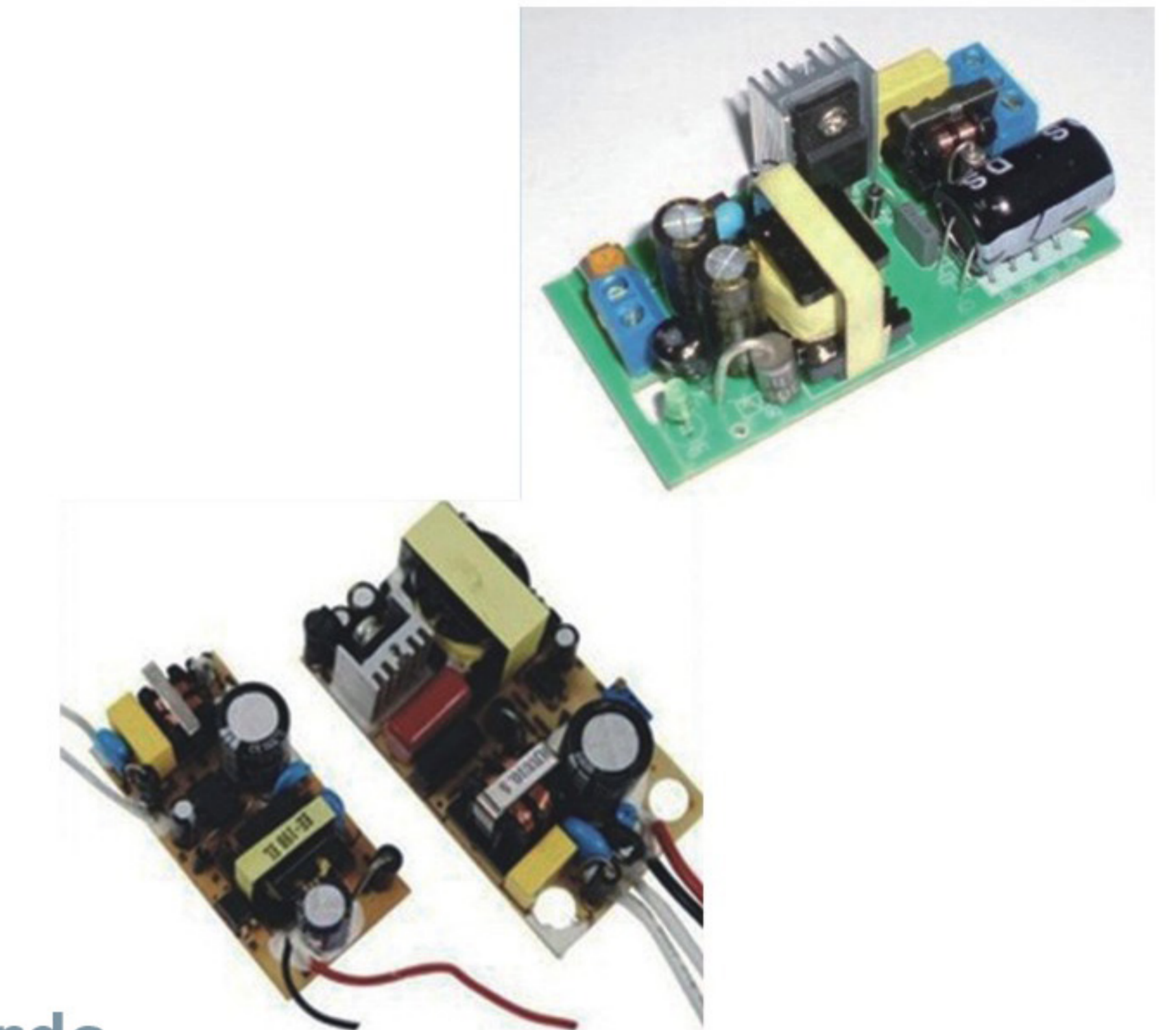
Led Constant Current Waterproof Driver

Watt	Max Current	Max Output
20W	600mA	9~108V
30W	900mA	9~108V
36W	1000mA	9~108V
40W	1100mA	9~108V
50W	1500mA	9~108V
70W	2100mA	9~108V
80W	2200mA	9~108V
100W	3000mA	9~108V
150W	4500mA	9~108V
200W	4500mA	9~108V
240W	5000mA	9~108V

Open Frame Series

General Specifications

- ★ Input: 90~264Vac/ 47~63Hz
- ★ Storage Temperature: -40°C~+80°C
- ★ Operating Temperature: 0°C ~+40°C
- ★ Operating Humidity: 10%~95%RH
- ★ Storage Humidity: / 10%~95%RH
- ★ Low standby power : 0.1W



Meets Energy Efficiency Level V Standards

- ★ Protection: Over Voltage/Short Circuit/
- ★ Approvals: UL/CUL/FCC/CE/CCC/KC/GS/PSE/C-TICK/SAA/TUV/BS/WEEE/ROHS/V/Reach

Output(V)	Min Current	Max Current	Watt
3.0 VDC	200mA	5A	15
4.5 VDC	200mA	6A	27
5.0 VDC	200mA	6A	30
6.0 VDC	200mA	6A	36
7.5 VDC	200mA	7A	53
9.0 VDC	200mA	8A	72
10.0 VDC	200mA	10A	100
12.0 VDC	200mA	13A	156
13.5 VDC	200mA	12A	162
15.0 VDC	200mA	11A	165
18.0 VDC	200mA	10A	180
19.0 VDC	200mA	10A	190
20.0 VDC	200mA	10A	200
24.0 VDC	200mA	10A	240
25.0 VDC	200mA	9A	225
27.0 VDC	200mA	8A	216
30.0 VDC	200mA	6A	180
36.0 VDC	200mA	6A	216
48.0 VDC	200mA	4A	192
96.0 VDC	200mA	2A	192

Power Supply Series

General Specifications

- ★ Input: 90~130Vac / 180-264Vac 47~63Hz
- ★ Storage Temperature: -40°C~+80°C
- ★ Operating Temperature: 0°C ~+40°C
- ★ Operating Humidity: 10%~95%RH
- ★ Storage Humidity: / 10%~95%RH
- ★ Low standby power : 0.5W~1W

Meets Energy Efficiency Level IV Standards

- ★ Protection: Over Voltage/Short Circuit/
- ★ Approvals: UL/CUL/FCC/CE/CCC/KC/GS/PSE/C-TICK/SAATUV/BS/WEEE/ROHS/V/Reach



Output(V)	Output(A)	Power(W)
5V	10A	50W
5V	20A	100W
5V	30A	150W
5V	40A	200W
5V	50A	250W
5V	60A	300W
5V	70A	350W
5V	80A	400W
5V	90A	450W
5V	100A	500W
12V	1A	12W
12V	1.5A	18W
12V	2A	24W
12V	3A	36W
12V	4A	48W
12V	5A	60W
12V	6A	72W
12V	8.5A	100W
12V	10A	120W
12V	10A	120W
12V	12.5A	150W
12V	15A	180W
12V	16.5A	200W

Output(V)	Output(A)	Power(W)
12V	20A	240W
12V	25A	300W
12V	30A	360W
12V	33A	400W
12V	40A	500W
12V	45A	540W
12V	50A	600W
24V	1A	24W
24V	1.5A	36W
24V	2A	48W
24V	5A	120W
24V	6.2A	150W
24V	8.2A	200W
24V	10A	240W
24V	12.5	300W
24V	15A	360W
24V	16.5A	400W
24V	20A	450W
24V	20A	500W
24V	25A	600W
48V	2A	600W
48V	5A	600W
48V	10A	600W